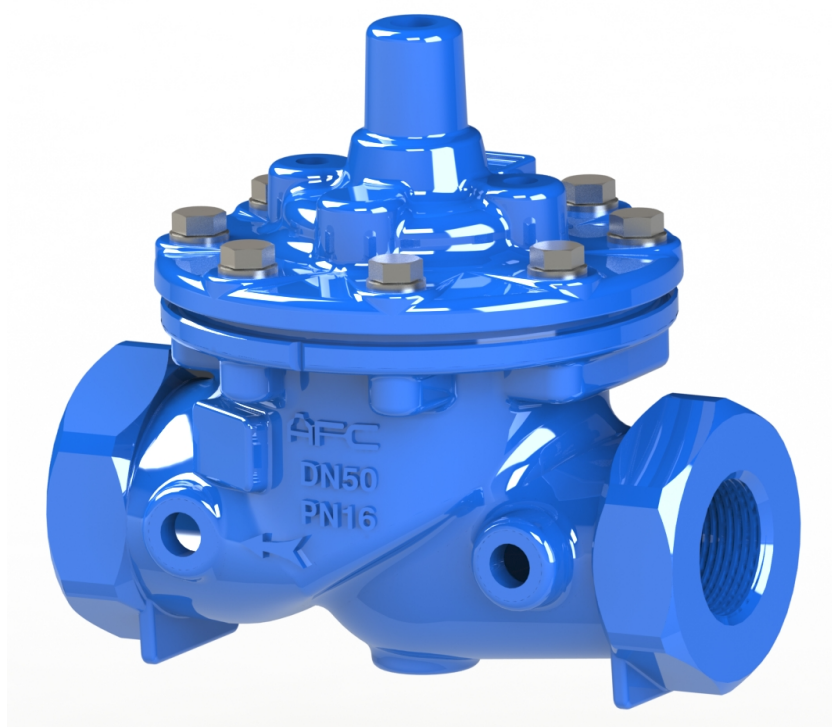


A900 Automatic Control Valve -Main Body Thread Connection. DN40 - 50

The A900 series of automatic control valves are Basic Valves to provide hydraulically driven solutions to pressure, flow and level control applications.

Features:

- Top and seat ring guided stem and diaphragm assembly for long life and reliability.
- All iron components are fusion epoxy bonded for corrosion resistance.
- Easy maintenance without removal from the main line.
- Nylon reinforced diaphragm for long term service.
- Drip tight shut off.
- Globe design for superior control characteristics.
- Ductile iron bodies for higher strength and durability.
- Corrosion resistant stainless steel seat and disc retainer ring.
- Various pilots and accessories available for configuration into many different applications.
- Special V-Port and double chamber are options, please consult factory.
- Meet standards BS EN 1074-5, ISO 5208, BS EN 12266-1, BS EN 558-1,



Technical Data:

Size Range: DN40~DN50mm
Pressure Ratings: 1.0Mpa; 1.6Mpa; 2.5Mpa
Working Temperature:-10°C- 80°C
Suitable Media: Water
End connection: BSPT/ NPT
Consult Factory for other applications

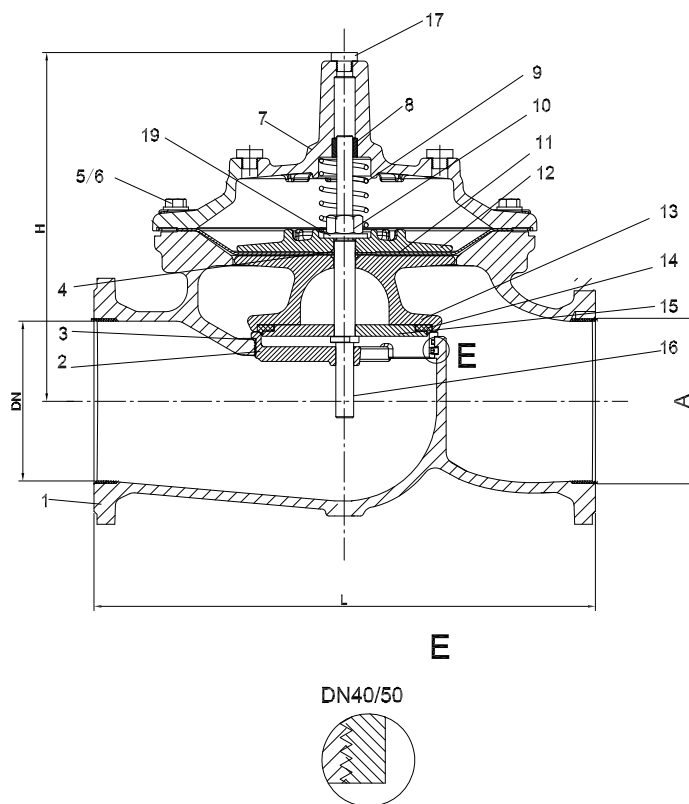
General Application:

For pressure, flow and level control in water applications.

Address: 272 Bath Street Glasgow G2 4JR Cell: +44 (0) 776348 8809: Land: +44 (0) 1369 760423:
Email: john@afcvlves.co.uk: Web: www.afcvlves.co.uk



A900-Main Valve DN40-DN50



Parts List

No.	Description	Material	Standard
1	Body	Ductile Iron	GJS 500-7
2	Seat	Stainless Steel	AISI 304/316
3	O-ring	Rubber	NBR
4	O-ring	Rubber	NBR
5	Bolt	Stainless Steel	A2/A4
6	Washer	Stainless Steel	A2/A4
7	Bonnet	Ductile Iron	GJS 500-7
8	Bush	Bronze	C61900
9	Spring	Stainless Steel	AISI 304/316
10	Caulking Nut	Stainless Steel	A4
11	Diaphragm	Nylon Reinforced Rubber	EPDM +Nylon Fabric
12	Fixing holder	Ductile Iron	GJS 500-7
13	Disc Holder	Ductile Iron	GJS 500-7
14	Seal	Rubber	EPDM
15	Seat Retainer	Stainless Steel	AISI 304/316
16	Stem	Stainless Steel	AISI 304/316
17	Plug	Stainless Steel	AISI 304/316
18	Screw	Stainless Steel	A2/A4
19	Washer	Stainless Steel	A2/A4

Dimension:

Unit: mm

DN	Model Code	L	H	A
40	A900-0040-BP	230	177	1&1/2"
50	A900-0050-BP	230	177	2"

Ordering Code

Main Valve:

A900: Full Bore Main Valve
R900: Reduced Bore Main Valve

A900 - 0040 - BP

Configuration:

BP: BSPT
NP: NPT

Size and Pressure Rating

Address: 272 Bath Street Glasgow G2 4JR Cell: +44 (0) 776348 8809: Land: +44 (0) 1369 760423:
Email: john@afcvalves.co.uk: Web: www.afcvalves.co.uk

