

BFPX - Back Flow Preventer

BFPX Back Flow preventer can help to prevent the contaminated water back flow in to drinking water system.

Low head loss and the release contaminated water pressure is adjustable. The relief water volume is also adjustable.

Features:

- High strength ductile iron body used for durability and less weight.
- Advanced dynamic design provides streamline flow and assures lower head loss.
- One of the lowest head loss back flow preventer in the world
- Coated with powder epoxy both inside & outside for corrosion resistance.
- Short body and easy for installation
- Diaphragm with nylon reinforcement
- Comply with ISO 5752, EN 1092-2, ISO 7005-2 flange dimension.

Technical Data:

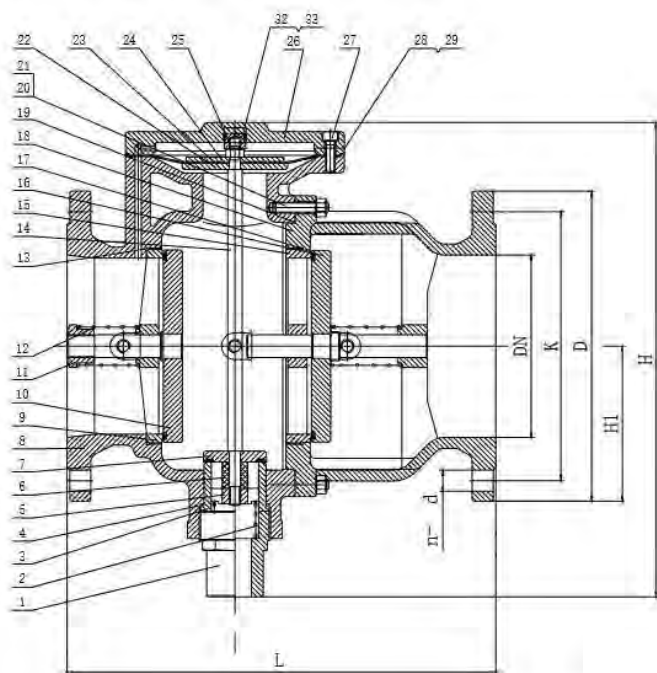
Size Range: DN50-400mm
Pressure Ratings: 1.0Mpa; 1.6Mpa. Working
Temperature: -10°C-80°C
Flow Media: Clean Water, contaminated water
End Connections: PN10, PN16

Service Fields:

Mainly used for switch part of clean water and contaminated water



BFPX - Flange type



Parts List

| No. | Part Name | Material | Standard |
|-----|----------------|-----------------|--------------------------|
| 1 | Relief Joint | Stainless steel | AISI304 |
| 2 | Spring | Stainless steel | AISI304 |
| 3 | Seat | Stainless steel | AISI304 |
| 4 | O-ring | Rubber | EPDM |
| 5 | Nut | Stainless steel | AISI304 |
| 6 | Bushing | Plastic | PTFE |
| 7 | Wedge | Stainless steel | AISI304 |
| 8 | Body | Ductile iron | GJS500-7 |
| 9 | Front Seat | Stainless steel | AISI304 |
| 10 | Front Retainer | SS+Rubber | AISI304+EPDM |
| 11 | Spring seat | Stainless steel | AISI304 |
| 12 | Spring | Stainless steel | AISI304 |
| 13 | O-ring | Rubber | EPDM |
| 14 | Stem | Stainless steel | AISI304 |
| 15 | Back Seat | Stainless steel | AISI304 |
| 16 | Back Retainer | SS+Rubber | AISI304+EPDM |
| 17 | O-ring | Rubber | EPDM |
| 18 | By-Body | Ductile iron | GJS500-7 |
| 19 | O-ring | Rubber | EPDM |
| 20 | Bolt | Stainless steel | AISI304 |
| 21 | Hex Bolt | Stainless steel | AISI304 |
| 22 | Down Retainer | Stainless steel | AISI304 |
| 23 | Diaphragm | Rubber+Nylon | EPDM+Nylon reinforcement |
| 24 | Up Retainer | Stainless steel | AISI304 |
| 25 | Bolt | Stainless steel | AISI304 |
| 26 | Bonnet | Ductile iron | GJS500-7 |

| | | | |
|----|--------|-----------------|---------|
| 27 | Bolt | Stainless steel | AISI304 |
| 28 | Bolt | Stainless steel | AISI304 |
| 29 | Gasket | Rubber | EPDM |

Dimension:

Unit: mm

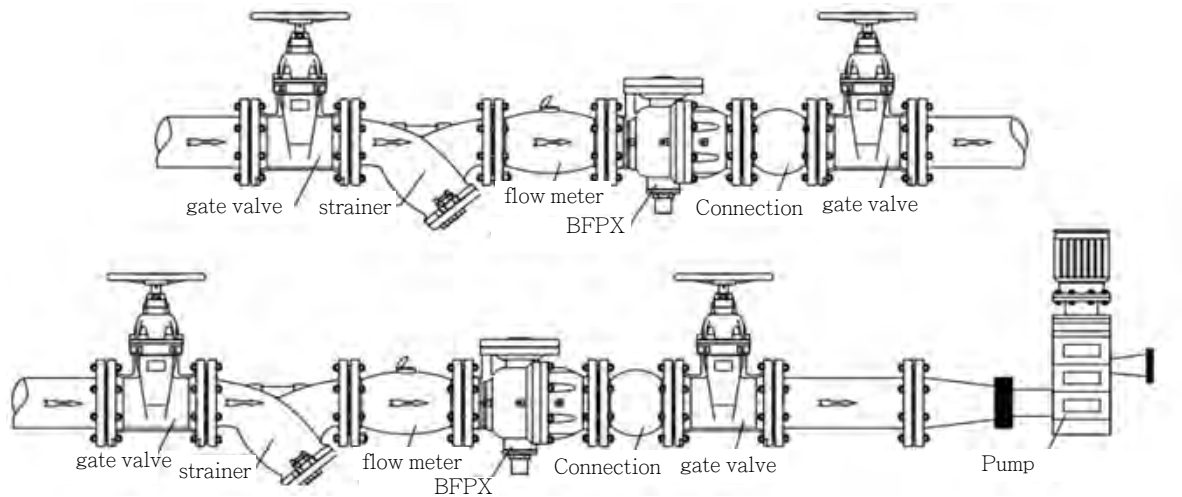
| DN | Model No | L (F/F) | ØD | | ØK | | n-Ød | |
|-----|-----------|------------|------|------|------|------|--------|--------|
| | | | PN10 | PN16 | PN10 | PN16 | PN10 | PN16 |
| 50 | BFPX-0050 | 230 | 165 | | 125 | | 4-Ø19 | |
| 65 | BFPX-0065 | 236 | 185 | | 145 | | 4-Ø19 | |
| 80 | BFPX-0080 | 276 | 200 | | 160 | | 8-Ø19 | |
| 100 | BFPX-0100 | 298 | 220 | | 180 | | 8-Ø19 | |
| 125 | BFPX-0125 | 303 | 250 | | 210 | | 8-Ø23 | |
| 150 | BFPX-0150 | 364 | 285 | | 240 | | 8-Ø23 | |
| 200 | BFPX-0200 | 470 | 340 | | 295 | | 8-Ø23 | 12-Ø23 |
| 250 | BFPX-0250 | 530 | 395 | 405 | 350 | 355 | 12-Ø23 | 12-Ø28 |
| 300 | BFPX-0300 | 580 | 445 | 460 | 400 | 410 | 12-Ø23 | 12-Ø28 |
| 350 | BFPX-0350 | 690 | 505 | 520 | 460 | 470 | 16-Ø23 | 16-Ø28 |
| 400 | BFPX-0400 | 770 | 565 | 580 | 515 | 525 | 16-Ø28 | 16-Ø32 |

AFC Valves UK Limited

Cell: +44 77634 88809
E-mail: john@afcvlves.co.uk
site: www.afcvlves.co.uk



Installation Recommendation



1. Before installation, the pipe should be washed out to clean.
2. The horizontal installation is recommended.
3. The gate valve should be installed in both side of the backflow preventer. There should be a strainer in the inlet of back flow preventer.
4. There should be more than 300mm tolerance between the water release nozzle and ground.

Ordering Code:

