

SKAA-Anti-Shock Sewage Combination Air Release Valve

Features:

- . Advanced design with simple mechanism, strong float to prevent cracking during sudden water hammer & quick closure.
- . Aerokinetic mechanism to resist blow shut under higher air velocity even up to sonic velocity of air.
- . With special expansion middle body design to help lower the sewage water flow speed, and let the air out but keep sewage water underneath.
- . Keep dirty or corrosive liquid inside the body for safety during operation and no harm to human & surrounding environment
- . Internal body guide and upper round wall keep float moving on its rail and keep liquid turbulence flow within this area.
- . Outside screen will be an option for safety and prevent insects or birds in.
- . Fully fusion epoxy coated inside and outside of valve body for long term services.
- . Manufacturing standard meets BS EN 1074-4, AWWA C512. Flange drilling and dimension meets
- . BS EN 1092 and BS EN 558 and ANSI flange.

SKAA- Anti-Shock Sewage combination air release valve Provides 3 functions:

- 1.Small air release during filling of the pipeline.
- 2.Small air venting under pressurized pipeline.
- 3.Large air intake during draining of the pipeline.



Service Fields:

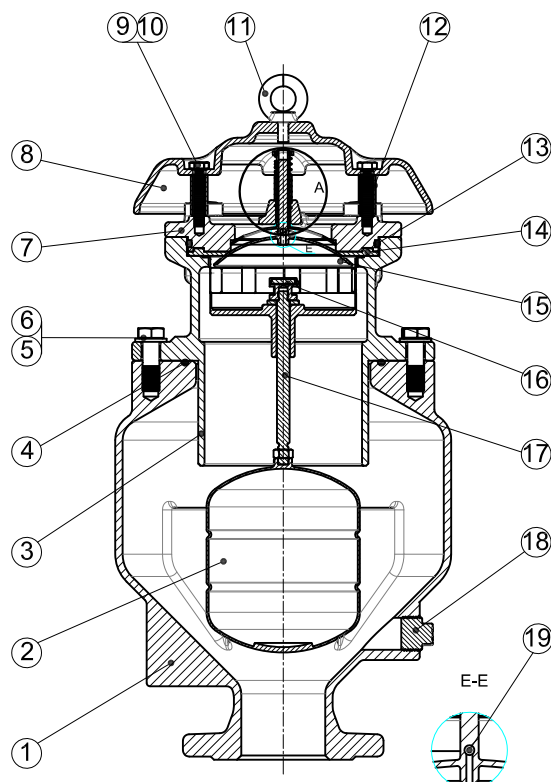
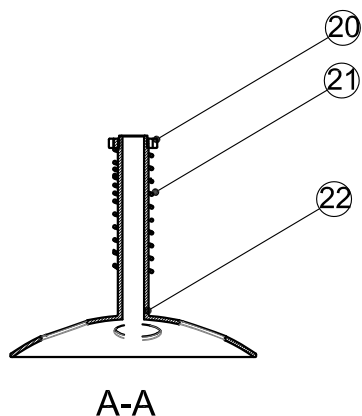
For sewage water system.

Technical Data:

Size range: DN 50-300MM
Pressure ratings: 1.0Mpa, 1.6Mp (Flange)
Working temperature: -10°-80°C.
Flow media: sewage water.

Please consult factory for PN25 and anti shock device whenever there is water hammer issue.

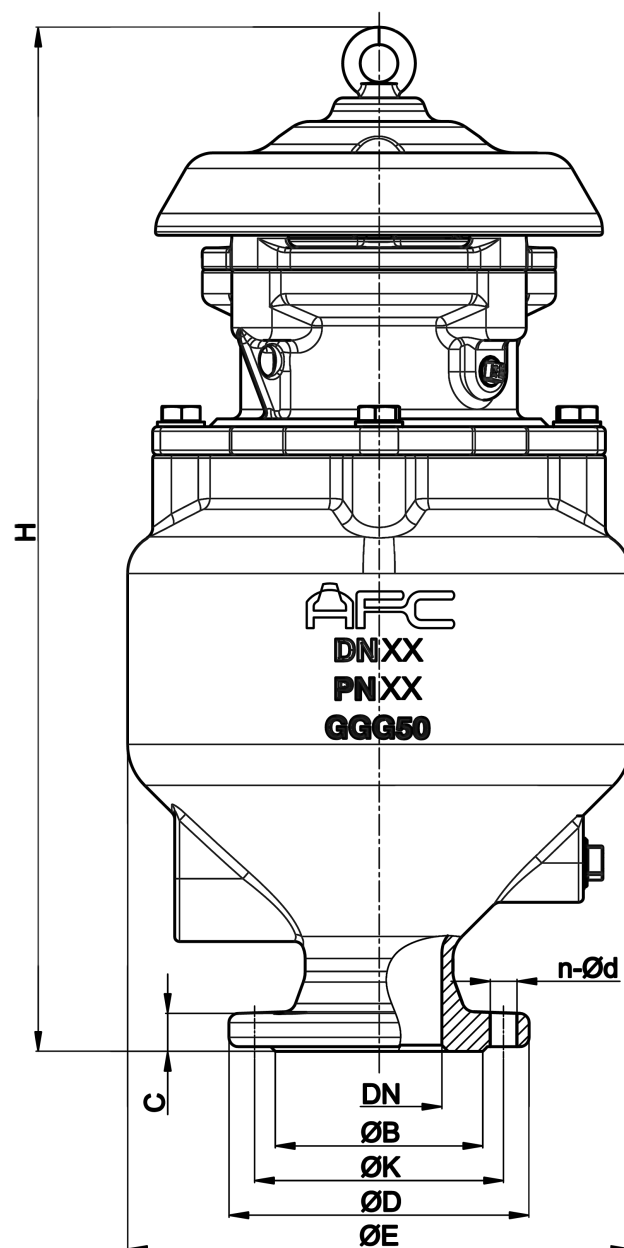
Main Valve-DN50-200



Parts List

No.	Part Name	Material	Standard
1	Body	Ductile Iron	EN GJS 500-7
2	Float	Stainless Steel	AISI 316
3	Middle Part	Ductile Iron	EN GJS 500-7
4	O-Ring	Rubber	NBR
5	Hex Bolt	Stainless Steel	AISI 316
6	Washer	Stainless Steel	AISI 316
7	Bonnet	Ductile Iron	EN GJS 500-7
8	Cover	Ductile Iron	EN GJS 500-7
9	Washer	Stainless Steel	AISI 316
10	Hex Bolt	Stainless Steel	AISI 316
11	Eye Bolt	Stainless Steel	AISI 316
*12	Pillar	Aluminium	Commercial
13	O-Ring	Rubber	NBR
14	Seat	Rubber	NBR
15	Sealing Arc	Stainless Steel	AISI 316
16	Nozzle Seat	Rubber	NBR
17	Stem	Stainless Steel	AISI 316
18	Plug	Stainless Steel	AISI 316
19	Small Nozzle	Stainless Steel	AISI 316
20	Nut	Carbon Steel	Commercial
21	Spring	Stainless Steel	AISI 304
22	Anti Shock Device	Stainless Steel	AISI 304

Dimension



Unit: MM

DN	Model No.	H	ØD		ØK		ØB		n-Ød		C	E
			PN10	PN16	PN10	PN16	PN10	PN16	PN10	PN16		
50	SKAA-0050	560	165		125		99		4-Ø19		19	250
80	SKAA-0080	666	200		160		132		8-Ø19		19	315
100	SKAA-0100	682	220		180		156		8-Ø19		19	335
150	SKAA-0150	820	285		240		211		8-Ø23		19	395
200	SKAA-0200	956	340		295		266		8-Ø23	12-Ø23	20	480
* 250	SKAA-0250	956	405		350	355	319		12-Ø23	12-Ø28	22	480
300	SKAA-0300	1115	460		400	410	370		12-Ø23	12-Ø28	24.5	640

* DN250 is a reduced bore

Ordering Code

